



## KIR ROYALE RIVER CRUISE

Kir Royale, the latest addition to our fleet, has a fascinating history.

---

Cruises, European Canal Barge Cruises



Europe, France



7 days from AU\$13,035 pp



Private

## Journey Overview

Kir Royale has a fascinating history. Converted to a beach landing craft in World War Two, she was sunk before being refloated and eventually transformed into a hotel barge. She now cruises the beautiful region of Champagne with its plethora of vineyards stretching across the rolling hillsides as far as the eye can see. There will be plenty of opportunities to sample the sparkling wine to which the region has given its name with private tastings at renowned champagne houses.

Her saloon is spacious and airy and has been the subject of a complete refit with bespoke furniture and a bar, piano and separate dining area. The four generous and individually decorated suites are each over 18.5 square meters in area and are also newly renovated. They have ultra-modern en suite bathrooms with his and hers sinks, and a luxurious oversized rainforest shower.

Outside, there is a small forward sun deck to watch the progress of the barge, a large and sheltered aft sun deck with covered dining area, sun loungers and heated spa pool, plus an upper observation deck with a panoramic view. Imbued with an air of style and elegance, Kir Royale is a great choice for discovering Champagne – whether you're cruising alongside the rolling vineyards, or perhaps on a private tour, savouring the wines, history and culture of this famous region.

### **Cruise Highlights**

- Private tour and tasting at world renowned champagne house, Moët & Chandon
- Tour the majestic cathedral in Reims, where the Kings of France were once crowned
- Visit the boutique champagne house of Frerejean Frères and enjoy lunch in the family domaine
- Enjoy a private winery tour and tasting at Maison Pannier, the largest champagne house in the western Marne Valley
- Cruise the pretty River Marne past waterside vineyards
- Visit Château-Thierry, the scene of fierce battles in World War One, and Belleau Wood



---

## Itinerary

### **Day 1: Châlons-en-Champagne**

Guests are met early afternoon in Paris\*\* and transferred to the hotel barge moored in Châlons-en-Champagne. Enjoy a champagne welcome while your Captain introduces you to the crew. Dinner on board.

### **Day 2: Châlons-en-Champagne to Tours-sur-Marne**

This morning cruise from Châlons-en-Champagne along the Canal Lateral à la Marne to a pretty mooring at Tours-sur-Marne. After lunch on board, visit the magnificent 800-year-old Reims cathedral, a Gothic masterpiece where the Kings of France were crowned, before some free time perhaps to wander around this delightful city with its grand squares and elegant shopping arcades. Dinner on board.

### **Day 3: Tours-sur-Marne to Dizy**

This morning visit one of the best known champagne houses in the world, Moët & Chandon, founded in 1743, where you are guided through their vast underground cellars, the largest in the region, which were carved out of the chalk to offer the maturing wine the perfect temperature and humidity. This is followed by a tasting of some of Moët's renowned vintages in an elegant private salon, hosted by an experienced cellar master. Later return to the barge for lunch and continue to cruise along the canal, with the opportunity to explore on foot or bicycle en route, and moor at Dizy, near Epernay. Dinner on board.

### **Day 4: Dizy to Damery**

After a leisurely breakfast, head off for a private champagne tasting and tour at the boutique Grand Cru winery of Frerejean Frères with a stop en route at a hillside vineyard to learn some of the key attributes of champagne grape growing. After the tasting, enjoy a gourmet private lunch in the salon of the family domaine. Return to the barge to continue the cruise along the Marne to Damery. Dinner onboard.

**Day 5: Damery to Dormans**

Today the hotel barge continues her cruise along the meandering Marne to moor at the pretty riverside town of Dormans, the site of a château, water mill and World War One memorial. In the afternoon, visit the 42-acre World War I American cemetery at Belleau Wood. It was here that US forces fought one of their bloodiest battles during World War One. Dinner on board.

**Day 6: Dormans to Château-Thierry**

This morning, visit La Maison Pannier, a select champagne house with a labyrinth of medieval underground cellars, for a tour and a private tasting. After lunch on board, cruise to the final mooring at Château-Thierry, an historic, strategically-situated town overlooking the river, surrounded by vineyards that produce some of the region's famous sparkling wine. Captain's Farewell Dinner on board.

**Day 7: Château-Thierry**

After breakfast, guests are transferred by private chauffeured minibus to Paris\*\*.

*This is a sample itinerary and is subject to change.*

*On alternate weeks, the cruise will be in the reverse direction.*

*\*\*other locations available for private Charter bookings.*

# Map





## Accommodation

### Kir Royale



Kir Royale has a fascinating history. Converted to a beach landing craft in World War Two, she was sunk before being refloated and eventually transformed into a hotel barge. She now cruises the beautiful region of Champagne with its plethora of vineyards stretching across the rolling hillsides as far as the eye can see. There will be plenty of opportunities to sample the sparkling wine to which the region has given its name with private tastings at renowned champagne houses.

Her saloon is spacious and airy and has been the subject of a complete refit with bespoke furniture and a bar, piano and separate dining area. The four generous and individually decorated suites are each over 200 sq ft in area and are also newly renovated. They have ultra-modern en suite bathrooms with his and hers sinks, and a luxurious oversized rainforest shower.

Outside, there is a small forward sun deck to watch the progress of the barge, a large and sheltered aft sun deck with covered dining area, sun loungers and heated spa pool, plus an upper observation deck with a panoramic view. Imbued with an air of style and elegance, Kir Royale is a great choice for discovering Champagne – whether you’re cruising alongside the rolling vineyards, or perhaps on a private tour, savouring the wines, history and culture of this famous region.

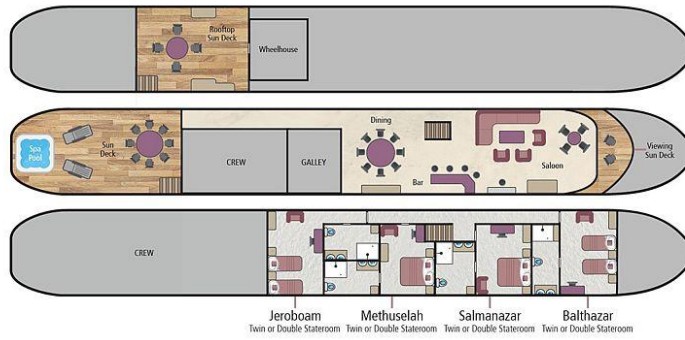
### Kir Royale

 Ultra Deluxe

 8 Passengers

 5 Crew

- 127 Feet Long
- 4 Twin/Double Suites  
(205-230 sq ft incl. en suite)
- Air-Conditioned / Centrally Heated
- Spa Pool





# Abercrombie & Kent

**Call Us Now on  
1300 851 924  
within Australia**

Melbourne Office:

T: +61 (0)3 9536 1800

F: +61 (0) 3 9536 1805

E: [contact@abercrombiekent.com.au](mailto:contact@abercrombiekent.com.au)

Address

Level 26 (North Tower)

80 Collins St

Melbourne, VIC, 3000

International:

New Zealand Call: 0800 441 638

Asia Call: 800 4747 7700